



# Example Database Tables / Relationships

HappyPaws – Products Only Database – L.J. Bothell

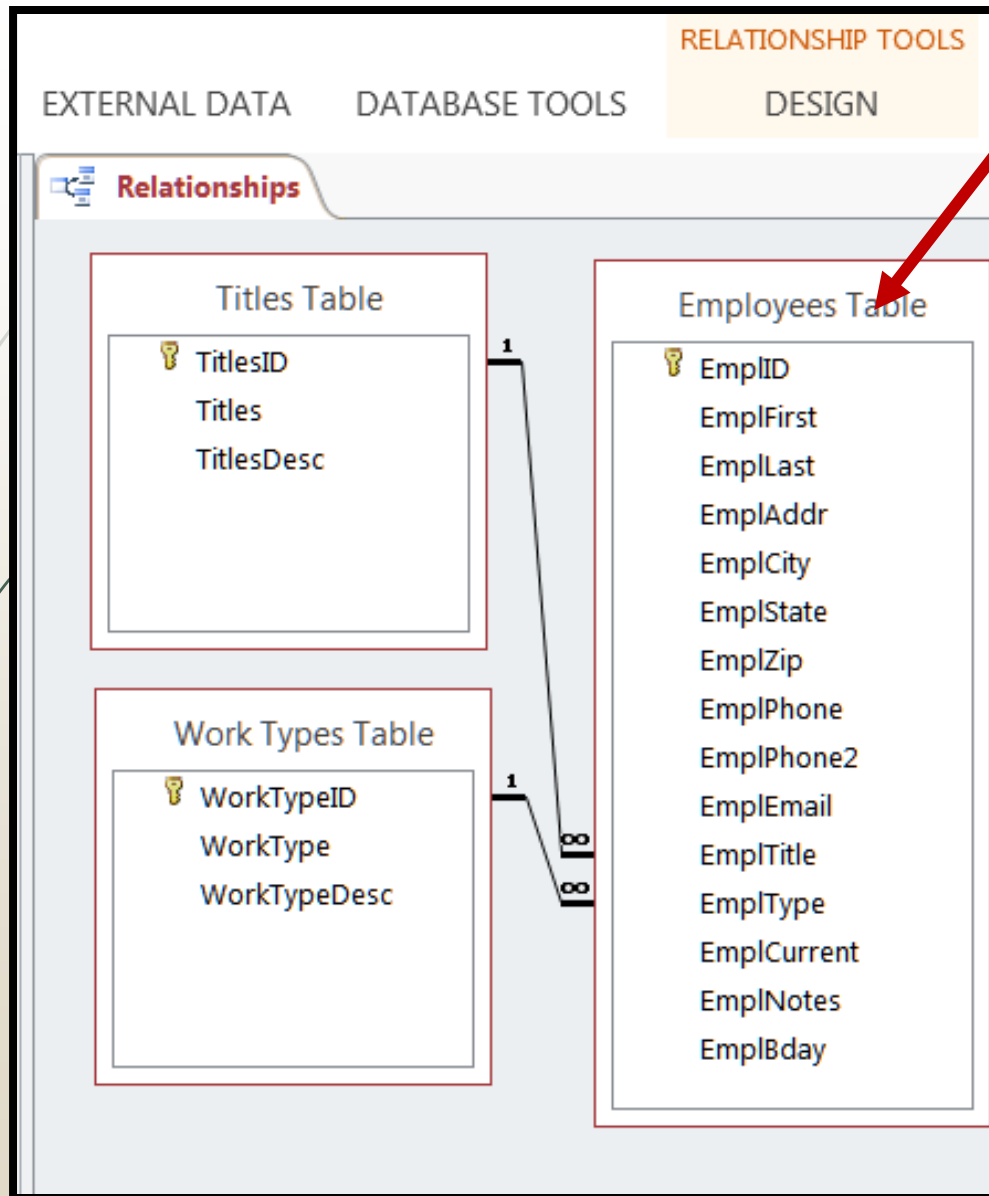
# LIST OF TABLES and the DB Info Table Design

The screenshot shows the Microsoft Access interface with the 'ZZ\_Database Info Table' open in Design View. The table has the following columns: DBID, TblNeeded, TblPurpose, and DBNotes. The data rows are as follows:

DBID	TblNeeded	TblPurpose	DBNotes
1	Customers	Customer Contact Information	Pet names not needed for product-only sales
2	Employees	List of employees, contact info, skills and titles	
3	Products	List of products we sell, prices, quantities, etc.	We stock and sell these, but do not ship or deliver.
4	Product Types	Categories of products, used as lookup table	Foreign key/lookup table for products table
5	Pet Types	Categories of pets, used as lookup table	Foreign key/lookup table for products table
8	Skill Types	Cateories of skill types that providers and employees	Foreign key/lookup table for employees table
12	Suppliers	List of product providers, contact info, and titles	Suppliers of the products for us
13	Titles	List of titles for employees and service providers: lool	Foreign key/lookup table for employees table
14	Work Types	Categories of work - part time, full time, subcontract	Foreign key/lookup table for employees table
16	Unit Types	Units that products can be sold in	Foreign key/lookup table for products table
17	Orders	Employees Ordering Supplies	
18	Orders Details	Employee Order Details	Details of all items in a single order
19	Purchases	Customer Purchases	NEW - needed customer purchases
20	Purchases Details	Customer Purchase Details	NEW - details of all items in a single purchase
*	(New)		

**NOTE:** THIS table has breaks in the AutoID column numbers because I deleted services-oriented tables from it.

# RELATIONSHIPS: EMPLOYEES

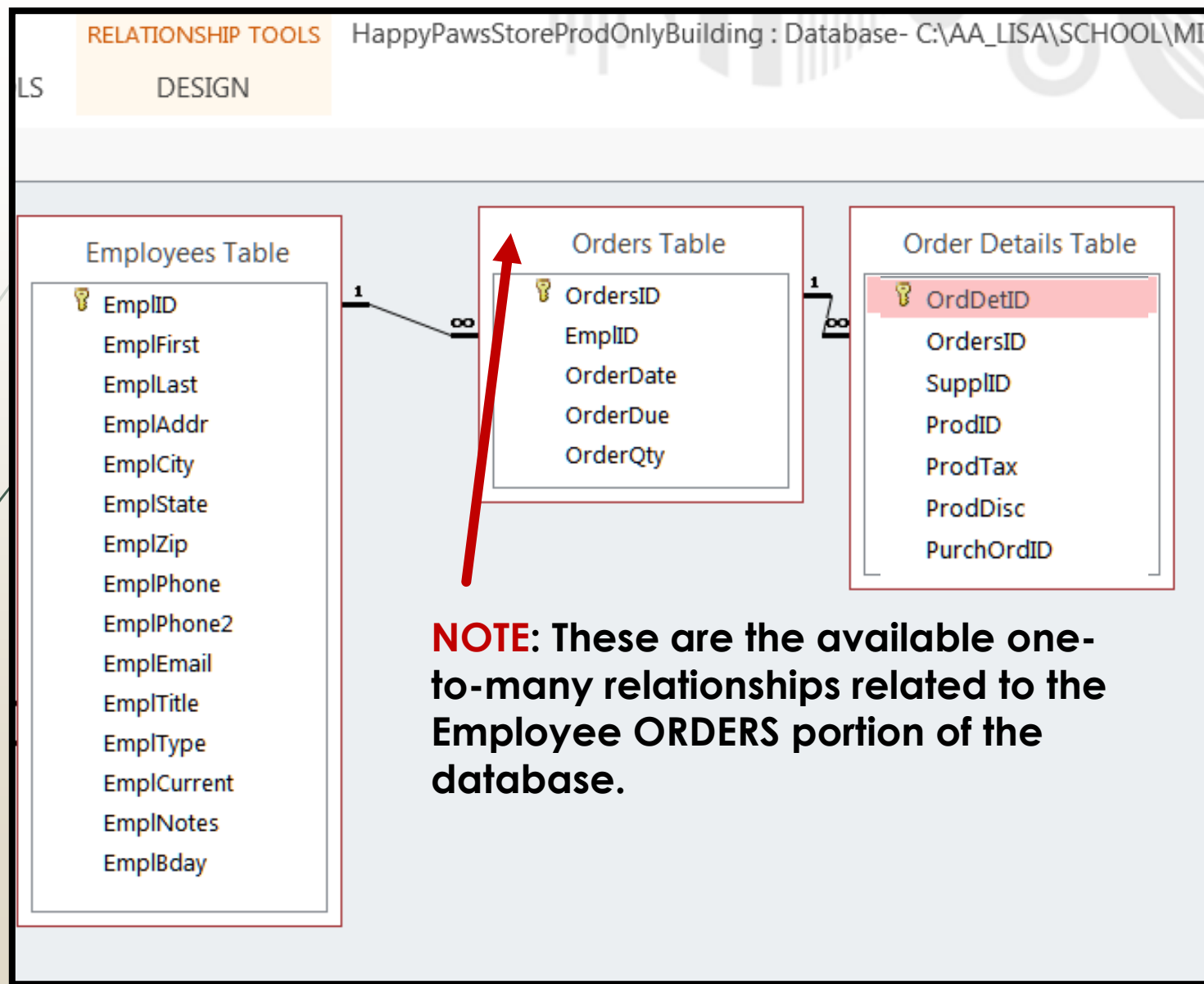


**NOTE:** These are the available one-to-many relationships related to the EMPLOYEES portion of the database.

## Types of 1-table Queries:

- Employees by Title
- Employees by Work Type
- Employee Birthdates
- Etc.

# RELATIONSHIPS: Employee ORDERS



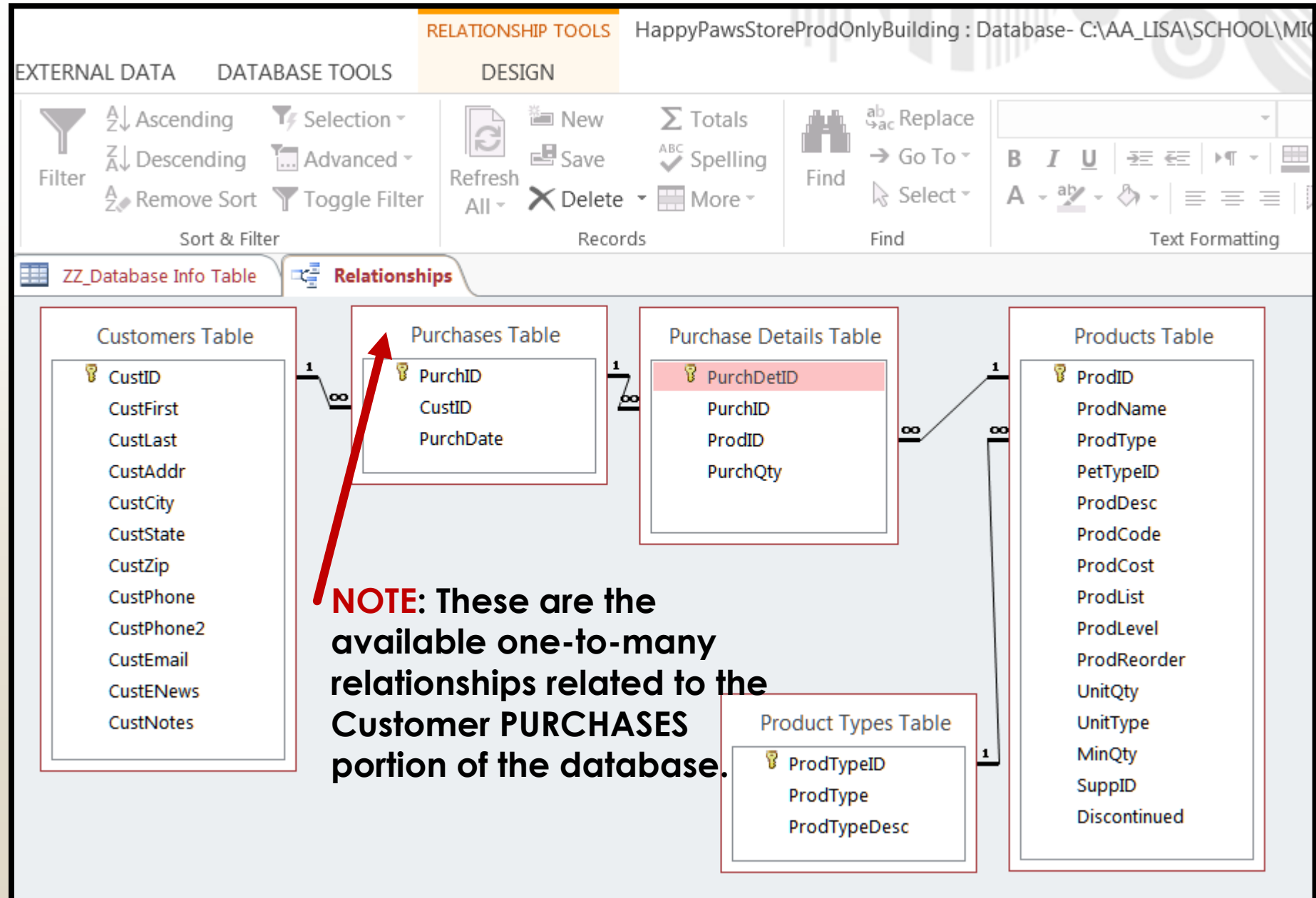
## Types of Queries:

- Products ordered by due date?
- Which Employee ordered which products?
- Orders by Purchase Order ID

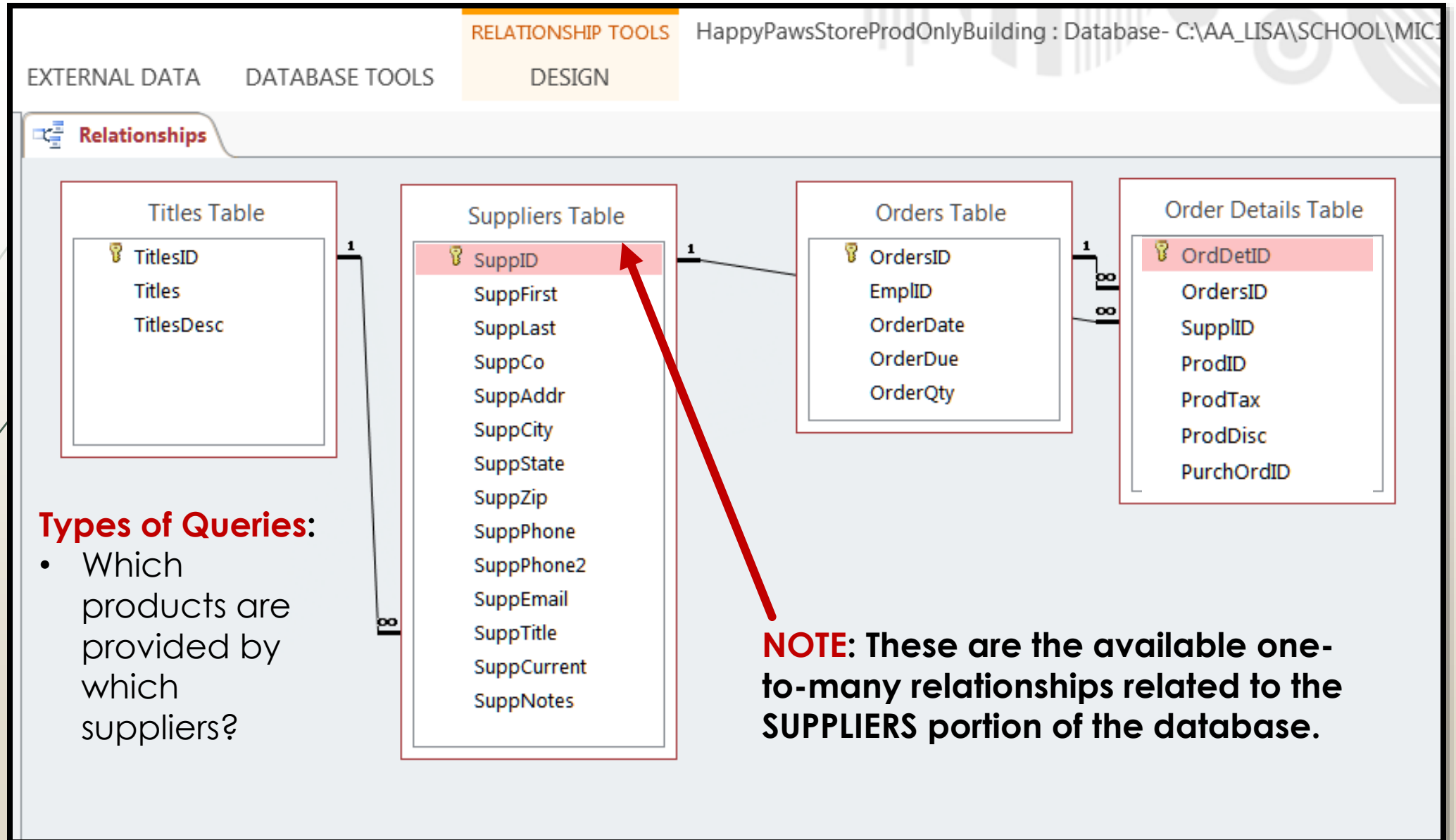
# RELATIONSHIPS: Customer PURCHASES

## Types of Queries:

- Products ordered on what dates?
- Which Customer purchased which products?
- Products purchased by customers' city
- Product Types most purchase in a date range



# RELATIONSHIPS: SUPPLIERS



# RELATIONSHIPS: PRODUCTS

## Types of Queries:

- Products by product type
- Products by Pet Type
- Products purchased in purchase date ranges, Etc.

